

HARSHIT DIAMOND TOWER

ARCHITECT: GREENWAVE

WESTERN UNION

WALKER'S

HARSHIT
diamond
TOWER

Singhanian Buildcon Group

"a graceful"

Stylish and luxurious 4 storied apartment
comprising of 24 two bedroom Flats,
with open / covered car parks and



all the other essential amenities growing from the depths only blossoming above the surface, it lifts purity and admiration out of the mundane. The project is conceived in such a way that every apartment is well ventilated, good sunlight and air, which will keep the inmates hale and healthy. The surrounding of the apartment is complementing. This unique insight and design sense has given rise to homes that are not just aesthetically superior, but contemporary and sensible for modern day needs and a comfortable lifestyle.



Materialise your dreams
According to your budget

"a man travels

the world in search of what he needs
and returns home to find it"



amenities

- Homes are designed based on Vastu, Ventilation and aesthetic requirement.
- Power backup is provided for the common facility.
- Covered/ Open Parking area.
- Round the clock security.
- Fire fighting system.
- Rain water harvesting.
- Well decorated Entrance Lobby, Corridors.
- Provision for Generator in electrical wiring of each unit.
- Loan Facility by all leading Banks.
- Intercom facility.



Facilities



Samsara
Panchdhara Mandir



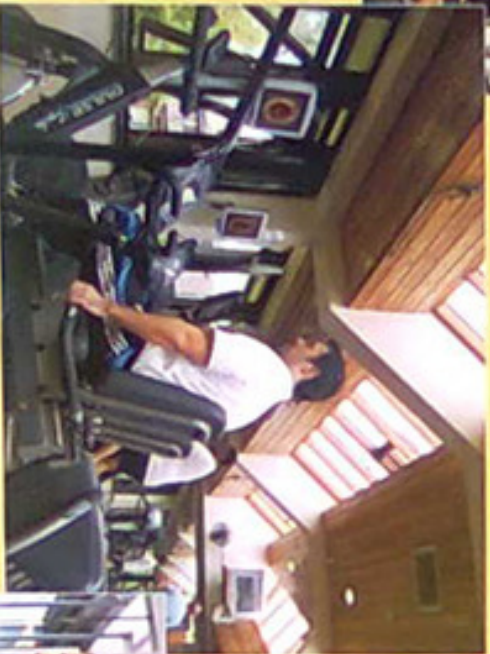
30000sq.ft. Garden



Near to temple approached by wide roads. Lush green and peaceful atmosphere Spiritual, peaceful apartments with ultra modern facilities and a beautiful garden road afore side.

Special Features

"When the only thing you accept in your life is..."



Gym

Well-equipped fitness centre specialized to meet the

requirements of men and women who want to be in the best of health and who take pride in their appearance.



Guest Room

Guest Room fully furnished air-conditioned make your 2 BHK flat automatically to 3 BHK when required for your guests.



Security with CCTV Camera

Round the Clock security guard highly Managed security with CCTV Cameras. Entrance, Lobby of Ground Floor for a Professional appearance to the Harshit Diamond Tower.

Specification

Structure

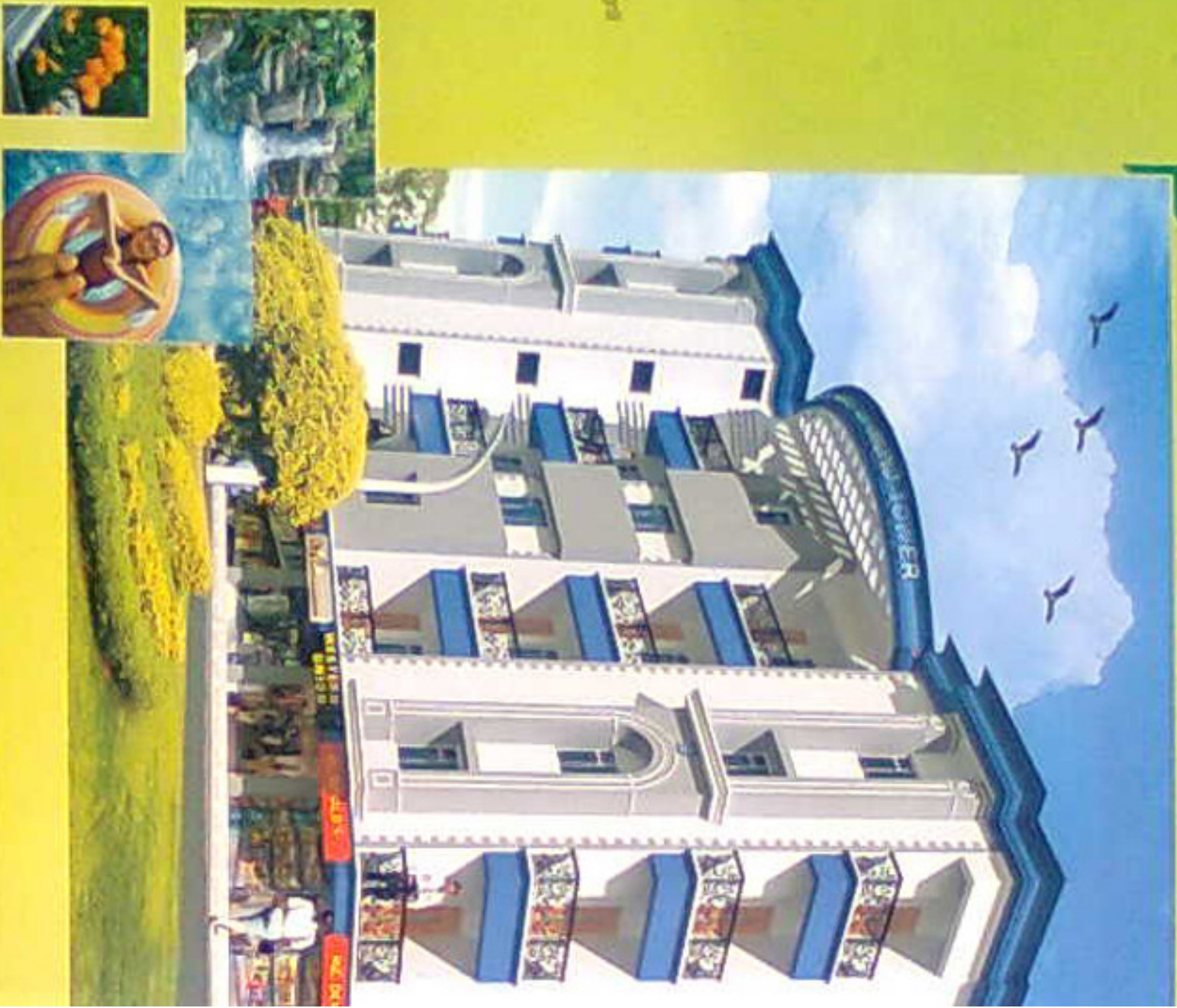
- ◆ R.C.C Column Beam Structure
- ◆ TMT Bar IS Mark 5 (S1) certified steel
- ◆ 17" thick brick wall (Standard Brick)
- ◆ 4" Thick partition wall

Doors & Windows

- ◆ Main entrance door: Designer Aluminium door window
- ◆ Good quality Designer Flush doors of IS mark for window
- ◆ Sliding Aluminium window of IS mark (Panel covered with mild steel grid with protection for wire mesh screen)
- ◆ Good quality "euro" wood door frame in all rooms & toilet
- ◆ Acce. laminate finishment

Floors

- ◆ Worked class all over except balcony & washing area
- ◆ ISI marked (R14 / AUTO / WESTERN MAKE) Cement
- ◆ 150mm Concrete slab in Toilet & Bath area 75mm height ISI marked
- ◆ Ceramic Tiles (Kiln/Vermade/Designer/Exported) on floor





Sanitary Fitting

- ❖ Sanitary fitting of reputed Company. One commode with jet fitting & one Indian seat in each unit ISI mark & ISO certified. (Jaguar, Parryware, Handware & More/ / Equivalent)
- ❖ Geyser point in all Bedrooms.

Wall Finishing

- ❖ Internal wall of white, putty & branded primer, paint used (Asian Nerolac & Berger)

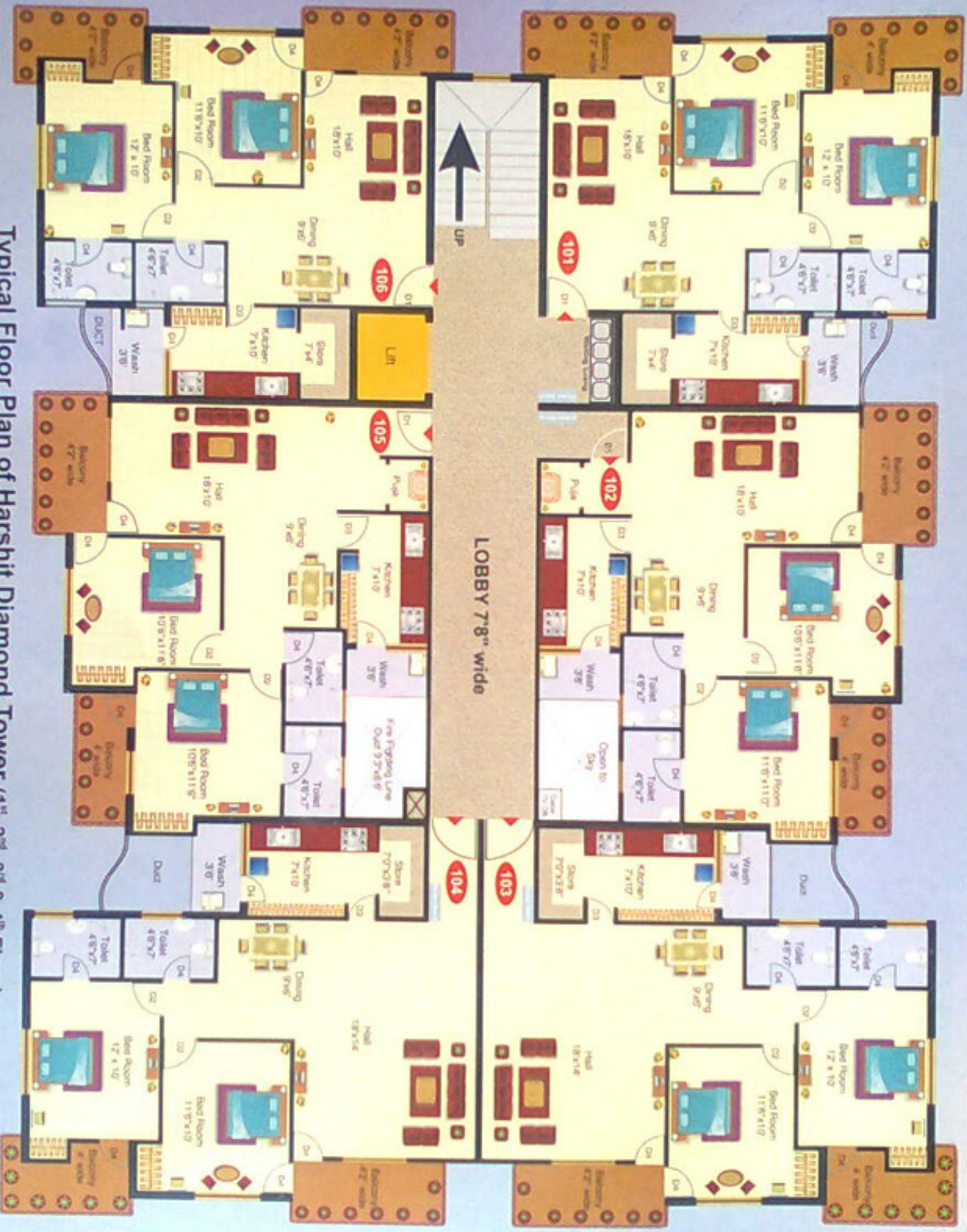
Electrification

- ❖ Concealed wiring (wires/cables of ISI mark & ISO certified reputed company) Power point for A/c in all bedrooms & hall. TV Cable point & Telephone point in all bedrooms & hall (Branded Modular Switches).
- ❖ Attractive power plugs, Fan regulators & other external electrification Havells, Finolex or Anchor

Kitchen

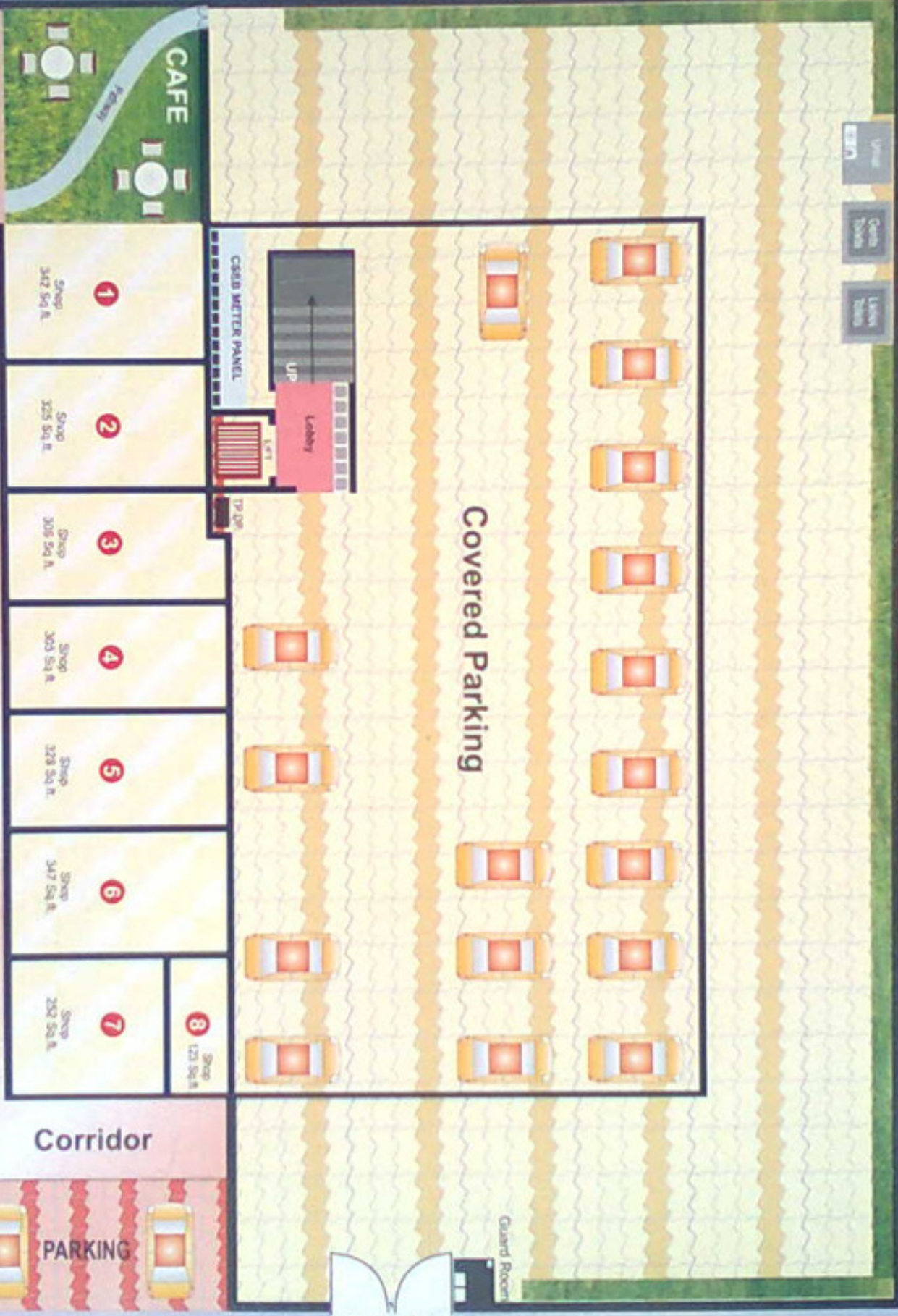
- ❖ Granite top platform with glazed tiles dado upto 2' height.
Power point for aqua guard, Mixer / Microwave, exhaust fan, Washing machine & refrigerator.
- ❖ Stainless Steel Sink





Typical Floor Plan of Harshit Diamond Tower (1st, 2nd, 3rd & 4th Floor)

Super Builtup Area - Flat No. 101 & 106 = 980 Sq.ft. | Flat No. 102 & 105 = 1020 Sq.ft. | Flat No. 103 & 104 = 1072 Sq.ft.



Covered Parking

Corridor

Corridor

PARKING

PARKING

1

Shop
347 Sq. Ft.

2

Shop
325 Sq. Ft.

3

Shop
308 Sq. Ft.

4

Shop
303 Sq. Ft.

5

Shop
328 Sq. Ft.

6

Shop
347 Sq. Ft.

7

Shop
252 Sq. Ft.

8

Shop
123 Sq. Ft.

CASH METER PANEL

UP

DOWN

TRASH

Guard Room

Entrance Gate

CAFE

Wayway

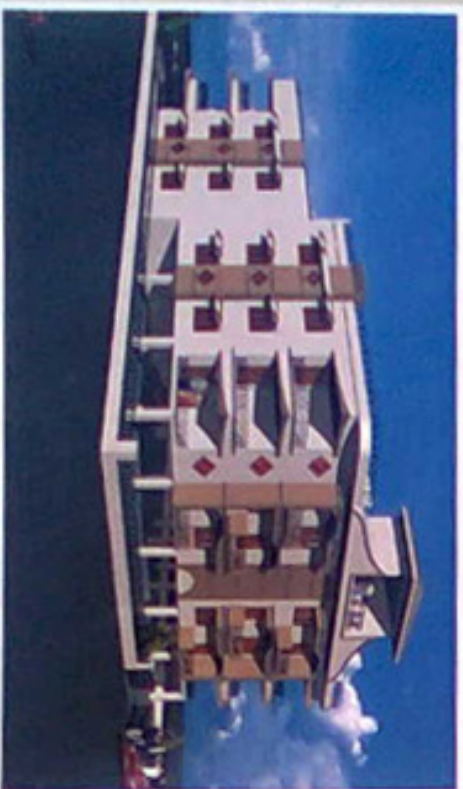
Our projects



Harshit Royal Regency

Near Vishwakarma Mandir,
Heerapur Road, Raipur, CG

Harshit Tower Block - A



Harshit Tower Block - B



Location :- Opposite Panchdham Temple, Heerapur, Raipur (C.G.)

Type :- 2 BHK Apartments

Location :- Opposite Panchdham Temple, Heerapur, Raipur (C.G.)

Type :- 2 BHK Apartments

about us



construction business is one area that has been geometrical in the recent past where several new players have entered the growth market amongst the established and reliable names. Singhania buildcon group stands proud with last 10 years of experience in serving clients across the Raipur. Our work in the industry has made us a respected name in the industry synonymous with ultra modern living in Raipur.

Our purpose is to plan and construct large scale state of the art housing complexes and undertake real estate development, translating into the every best in terms of comfort, Durability, aesthetics, Security luxury of style.

We have suffered every construction needs under varied condition in term of location, design, legal procedures and budget & our company believes in developing and constructing designed, economically viable residential and commercial complexes of international quality. We believe our building should reflect engineering excellence with a view to providing complete customer demand for our products.

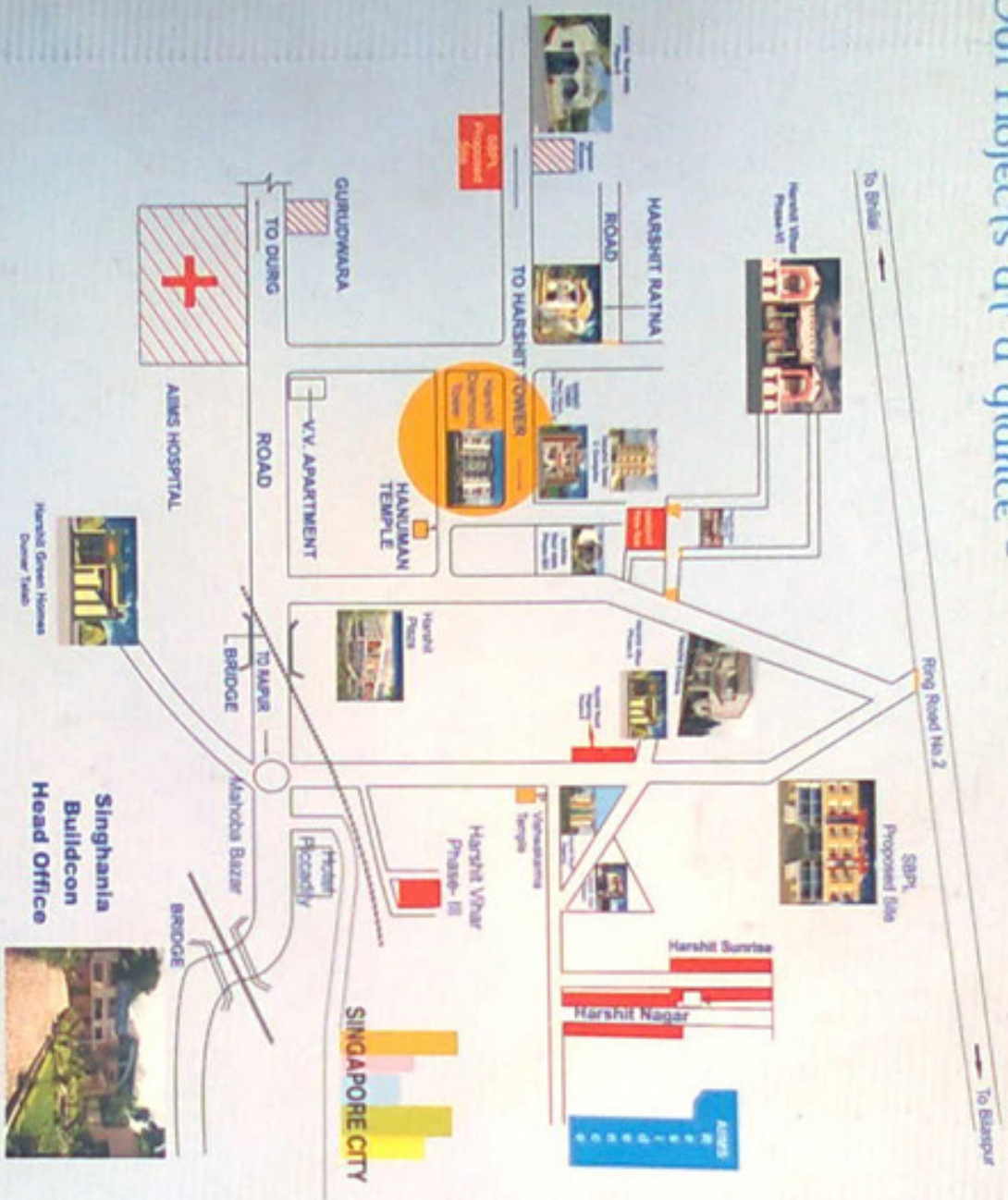
Our company acquired the ISO 9001-2000 certification and all our construction and projects related activities conform to the ISO standards.

We aim create and deliver value based services every time we decide on any project. Our every Project incorporates the finest utilities and facilities that are consigned with concerns to the needs of our clients, our commitment to value creation is our major factor that sets us apart from our competitors and imparts a unique feel and experience to each of our projects.

The top management and Director of Singhania Buildcon Group play very important and dynamic role in keeping the performance of the company consistent, successfully accomplishing new projects and delivering the best housing project and services to its discerning customers and clients. We managed and staffed by highly experienced, technically top of the line professionals with year of experience in the construction.

The Royal People live always in Singhania Buildcon Group.

Our Projects at a glance -



Proximity Landmarks

SCHOOL	0.5 K.M
RLY STATION	5.0 K.M
VEG MART	0.7 K.M
N. HIGHWAY	0.2 K.M
POLICE STATION	1.0 K.M
AIRMS HOSPITAL	0.5 K.M
BUS STOP	0.6 K.M
STATE BANK	1.5 K.M
JAIN STAMB	5.0 K.M
P. R. S. UNIVERSITY	1.5 K.M

Architect

Neeraj Shivastav B.Arch
Architect Planner & Interior Designer

5, Pushpak Apartment, Opp. Govt. High School, Chhotapara, Raipur (C.G.)
Tel : 0771 - 2538759 (O), Cell : 94252 - 06450

Structural Engineer

Prashant Kanti S.F. 15, Maharajm Pura, Barisal Road, Raipur
A.E. No. 46 Sec. AMULSIY Tel : 0771 - 2538759, Cell : 94251 - 66433

Legal Advisor

Sudhir Agrawal Purnam Baid Raipur (C.G.)
Tel : 2234458 Cell : 98274 - 9885



SINGHANIA BUILDCON GROUP

AN ISO 9001:2000 Certified Co.

SINGHANIA BUILDCON Pvt. Ltd.

Amanaka, G.E. Road, Raipur (C.G.)
Phone : 0771 - 2262421, 2262621, Fax : 0771 - 2263821
Email : singhabuildcon@rediffmail.com, www.singhaniabuildcon.com
Contact for Booking : 92292 62103, 4, 5, 6, 93017 21003